

**SHARED  
PRODUCTIVITY**

GRAPHISOFT®  
**ARCHICAD 13**

**Canada**

**GSCNE Inc.**

1473 Crescent Road  
Mississauga, ON L5H 1P5  
Tel: (905) 274-5534  
<http://www.gscne.com>  
[info@gscne.com](mailto:info@gscne.com)

## DESIGN FILE SHARING WITH **GRAPHISOFT BIM SERVER**

Building Information Modeling (BIM) brings unique challenges to the design team: when implementing BIM on a large scale, architects often run into bottlenecks in model accessibility and workflow management. ArchiCAD 13 introduces the industry-first GRAPHISOFT BIM Server™ for on-demand management of access rights and on-demand access to projects for teams of any size, both within the office and through the Internet.

### **SPEED**

Thanks to ArchiCAD 13's collaborative environment, long waiting times for server synchronization are a thing of the past. Our leading edge Delta Server technology dramatically decreases network traffic, so team members can collaborate on BIM models in real time. The same technology makes BIM projects accessible through standard Internet connections from virtually anywhere in the world.

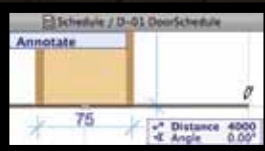
### **DATA SAFETY**

Data corruption due to network or hardware failure is a big concern for CAD/BIM Managers: a single faulty computer literally can ruin the work done by the whole office. But the BIM Server's robust system architecture ensures the integrity of the BIM project at all times. Any data errors from malfunctioning workplaces are blocked, preserving the project's integrity on the network.

### **WORKFLOW**

ArchiCAD 13's new Teamwork, with on-demand element access and server-level conflict management, combines the flexibility of 2D workflows with the coordination power of the model-based world. Companies can utilize their workforce much more efficiently with a dynamic and centrally controllable design workflow.

# 13 REASONS FOR ARCHICAD 13



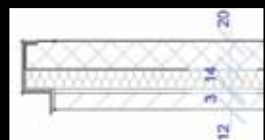
## Annotated Schedule Drawings

Door and window previews can be associatively annotated right in the interactive schedule window. This feature alone saves significant drafting time for the documentation team.



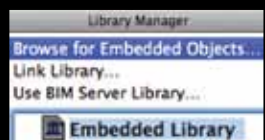
## Oriented Views

In ArchiCAD 13, your project lines up just the way you need it: simply rotate the view on screen to a perpendicular position. Now you can edit diagonal wings comfortably, while your annotations adjust automatically to the final layout orientation.



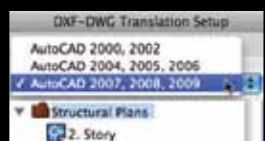
## Intelligent "Soft" Insulation

Although fills have been around since the advent of CAD, modeling soft insulation in composite structures has been problematic. ArchiCAD 13's soft insulation is the 100% solution: not just for 2D, but for 3D Documents as well.



## Improved Object Handling

Global model view options help control the display and handling of library objects at a project level. Project specific library parts can now be saved into the ArchiCAD project file itself, eliminating the "missing library part" phenomenon that occurred whenever library parts were not loaded with the project.



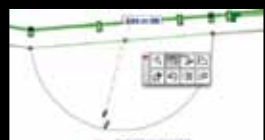
## DWG Enhancements

ArchiCAD 13 makes significant progress in the development of the DWG I/O. New features include improved layer management and the ability to export multiple layouts into a single DWG file.



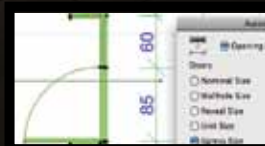
## Data Exchange with Engineers

ArchiCAD 13 supports the classification of BIM elements as either load-bearing or non-load-bearing structures, for more accurate export to programs used by structural engineers. Thousands of standard steel profiles are now available from within ArchiCAD 13.



## Improved Curtain Wall Editing

The system geometry of highly integrated Curtain Wall systems introduced in ArchiCAD 12 now can be freely edited in any view of ArchiCAD 13. Curtain Wall reference lines can now be modified on the floor plan, using standard pet-palette operations.



## Enhanced Automatic Dimensioning

ArchiCAD 13 allows further customization of the powerful automatic dimensioning function. In the latest version, doors and windows can be dimensioned using a variety of refined options (e.g. opening egresses).



## Improvements for Slabs/Roofs

To further refine interconnection of intelligent modeling elements in ArchiCAD 13, the slant angle and material of slab/roof edges can be adjusted with complete freedom to match joining elements.



## Dynamic "Fit in Window"

New zooming option in View Settings allows you to vary a view's display dynamically, by displaying the entire current model contents (Fit in Window). This option is a great "usability" feature for editing, and for creating an automatically adjusted zoom for placed drawings.



## Improved "Find & Select"

Find & Select function is now extended with the option to assign multiple values to particular selection criteria. More complex search criteria enable more sophisticated search queries in ArchiCAD 13.



## "Ruler"

New editing aid gives instant, dynamic feedback on the cursor's vertical and horizontal position in ArchiCAD 13. Guidelines can now also be placed with a single click on the Ruler. The Ruler provides great productivity improvement in arranging drawings on layouts.



## 64-bit Support for Windows

As the natural next step after introducing multi-processor support in ArchiCAD 12, now the latest version of ArchiCAD is available on Windows with native 64-bit support.

# GRAPHISOFT ARCHICAD 13

GRAPHISOFT and ArchiCAD are registered trademarks of GRAPHISOFT. All other trademarks are property of their respective owners.

**For more details, contact any GRAPHISOFT office, or visit: [www.graphisoft.com](http://www.graphisoft.com)**

### Headquarters

GRAPHISOFT R&D zrt.  
Phone: +36 (1) 437 3000  
Fax: +36 (1) 437 3099  
E-mail: [mail@graphisoft.hu](mailto:mail@graphisoft.hu)  
Web: [www.graphisoft.com](http://www.graphisoft.com)

### Japan

GRAPHISOFT Japan KK.  
Phone: +81 (3) 55 45 3800  
Fax: +81 (3) 55 45 3804  
E-mail: [mail@graphisoft.co.jp](mailto:mail@graphisoft.co.jp)  
Web: [www.graphisoft.co.jp](http://www.graphisoft.co.jp)

### Spain

GRAPHISOFT Spain, SL.  
Phone: +34 (91) 535 8750  
Fax: +34 (91) 535 8751  
E-mail: [mail@archicad.es](mailto:mail@archicad.es)  
Web: [www.archicad.es](http://www.archicad.es)

### United Kingdom

GRAPHISOFT UK Ltd.  
Phone: +44 (1483) 263 150  
Fax: +44 (1483) 263 151  
E-mail: [mail@graphisoft.co.uk](mailto:mail@graphisoft.co.uk)  
Web: [www.graphisoft.co.uk](http://www.graphisoft.co.uk)

### Germany

GRAPHISOFT Deutschland GmbH.  
Phone: +49 (89) 746 430  
Fax: +49 (89) 746 43299  
E-mail: [mail@graphisoft.de](mailto:mail@graphisoft.de)  
Web: [www.graphisoft.de](http://www.graphisoft.de)

### Russia

GRAPHISOFT Representative Office  
Phone: +7 495 510 2503  
E-mail: [russia@graphisoft.com](mailto:russia@graphisoft.com)  
Web: [www.graphisoft.ru](http://www.graphisoft.ru)

### South-East Asia & China

GRAPHISOFT Representative Office  
Phone: +65 65632827  
Fax: +65 65632827  
E-mail: [asia@graphisoft.com](mailto:asia@graphisoft.com)

### United States

GRAPHISOFT U.S., Inc.  
Phone: +1 (617) 485 4203  
Fax: +1 (617) 485 4201  
E-mail: [info@graphisoft.com](mailto:info@graphisoft.com)  
Web: [www.graphisoftus.com](http://www.graphisoftus.com)